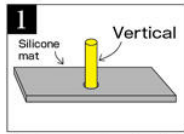




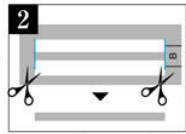
Set a straw and make a 2mm round hole

Materials

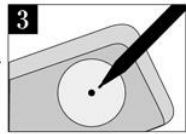
- LED Curing Resin "Star Drop" Hard type
- Hole maker (B, straw)
- Silicone Mold Sphere
- UV-LED Smart Light
- Scissors



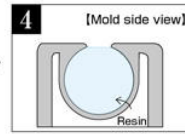
1 Cut an attached straw in 1 cm length and insert it straight in 2mm hole on a silicone mat.



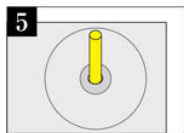
2 Cut a silicone stick B with scissors as shown.



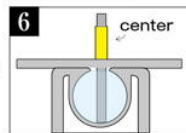
3 Dot on a hole position on the back.



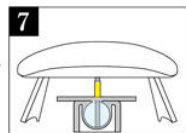
4 Insert parts and resin into mold. Do not pour too much resin.



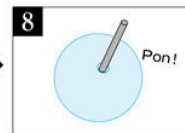
5 Place the silicone mat to the center of the spout.



6 Insert the B stick through the straw and stand vertical to the bottom. Check the tip right on a dot.

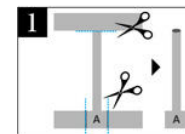


7 Cure the mold well from above and below under the light.

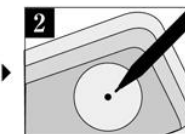


8 Cool it down for 5 mins and take it out from the mold. Pull the D stick out.

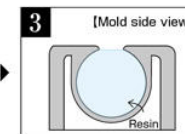
How to make a 3mm round hole in spherical mold



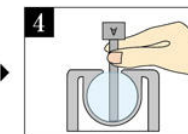
1 Cut a silicone A with scissors as drawing.



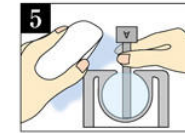
2 Dot on a hole position at the back side of the mold.



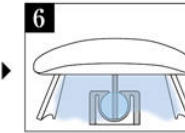
3 Insert parts and resin into mold. Do not pour too much resin.



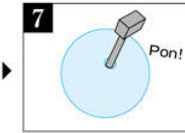
4 Stand the A stick upright. Check the tip position right on a dot.



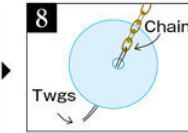
5 Keep the position and cure the mold for 10 seconds with handy LED light.



6 Lift the light up with its stand. Place the mold under the light and cure the resin well.



7 Cool the resin down for 5 minutes and take it out from the mold. Check the resin condition well cured, and pull the silicone A out from the resin.



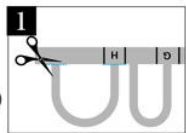
8 Thread nylon into a chain. Use the nylon as needle to push it into the hole.



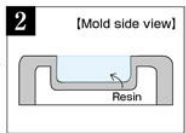
How to make U shaped chain hole (size: 2mm hole)

Materials

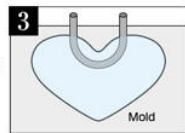
- LED Curing Resin "Star Drop" Hard type
- Hole maker (F or G or H)
- Soft mold <Heart>
- UV-LED Smart Light
- Tegs
- Chain
- Scissors



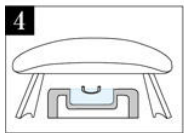
1 Cut H with scissors.



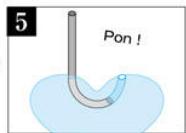
2 Pour resin and set enclosed parts into a mold.



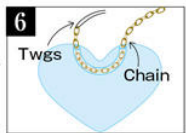
3 Set U shaped silicone in the mold as it is drawn.



4 Cure the mold under the light.



5 Cool down and take resin out, and then pull the stick out.



6 Thread nylon into a chain. Use the nylon as needle to push it into the hole.

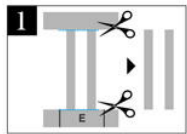
How to Care

- Put the cut parts in an attached bag so as not to be lost.
- Wash it when it gets dirty.

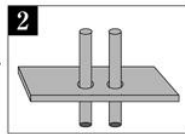


How to make a 2mm buttonhole

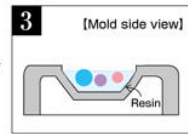
- Materials**
- LED Curing Resin "Star Drop" Hard type
 - Hole maker (E)
 - Soft mold
 - UV-LED Smart Light
 - Scissors



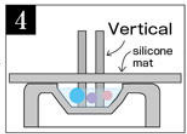
1 Use silicone E. Cut 2 pcs of the E sticks with scissors.



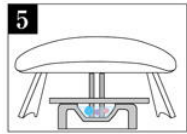
2 Put E sticks in buttonholes on a silicone mat.



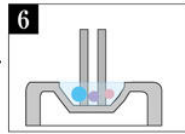
3 [Mold side view] Pour resin and set enclosed parts into a mold.



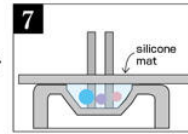
4 Set the mat with sticks on the mold. Push sticks at the bottom of the mold. Use a preferred texture of the mat.



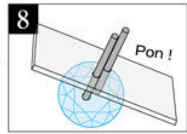
5 Cure the mold under the light.



6 Pull the mat out and pour more resin if necessary to make layers.



7 Set the mat again to make the resin surface flat. Wipe off flooded resin with tissue.

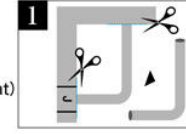


8 Cool down the mold and take the resin out. Pull D sticks out.

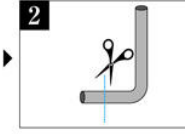


How to make L shaped chain hole (size 2mm hole)

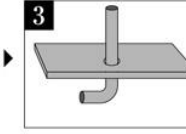
- Materials**
- LED Curing Resin "Star Drop" Hard type
 - Hole maker (J or I, mat)
 - Soft mold <Cube>
 - UV-LED Smart Light
 - TEGS
 - Chain
 - Scissors



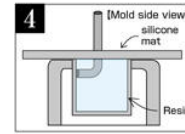
1 Cut J or I silicone with scissors.



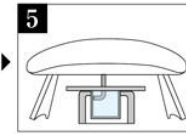
2 Adjust length with scissors.



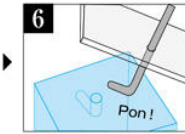
3 Insert J or I stick into 2mm hole of the silicone mat.



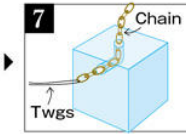
4 [Mold side view] Pour resin and place the mat on top. Check the stick-end attached to the side of mold inside the resin.



5 Cure the mold well from above and below under the light.



6 Cool down, take resin out, and pull the stick out.



7 Thread nylon into a chain. Use the nylon as needle to push it into the hole.